

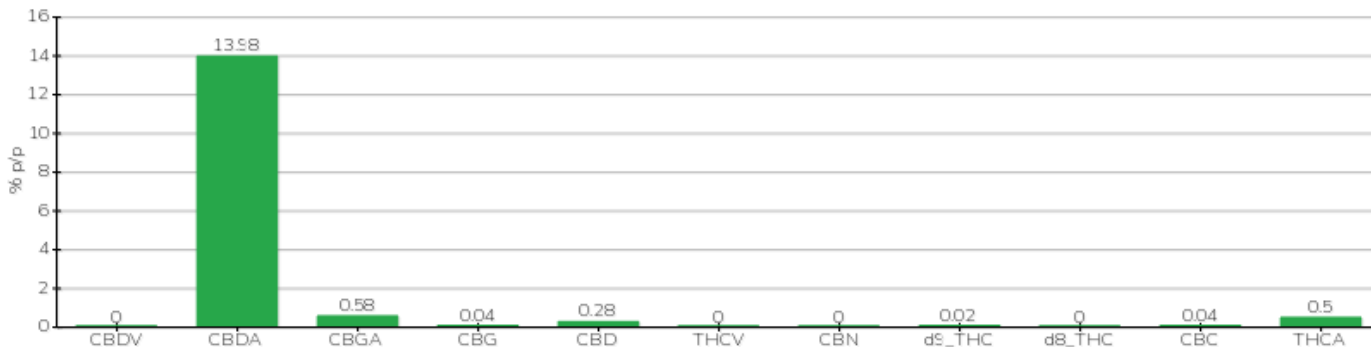
# TECHNICAL REPORT

<b>Committente</b>	Green Valley società agricola a.r.l.	<b>Etichetta</b>	Premium Hemp
<b>Data accettazione</b>	23/10/2023	<b>Tipologia campione</b>	infiorescenza
<b>Data analisi</b>	23/10/2023	<b>varietà</b>	NA
<b>Codice riferimento interno</b>	GRV2310.A.1	<b>N. Cartellino</b>	NA
<b>Metodica analitica</b>	HPLC - HS - Rev.2	<b>Campionamento</b>	a cura del cliente
<b>Lotto</b>	GVMFIN423		

**Note**

Parametro	% p/p	Metodo
CBDV	<0.01%	HPLC-UV
CBDA	13.98%	HPLC-UV
CBGA	0.58%	HPLC-UV
CBG	0.04%	HPLC-UV
CBD	0.28%	HPLC-UV
THCV	<0.01%	HPLC-UV
CBN	<0.01%	HPLC-UV
d9_THC	0.02%	HPLC-UV
d8_THC	<0.01%	HPLC-UV
CBC	0.04%	HPLC-UV
THCA	0.50%	HPLC-UV
<b>CBD TOTALE</b>	<b>12.54%</b>	<b>CALCOLATO</b>
<b>CBG TOTALE</b>	<b>0.55%</b>	<b>CALCOLATO</b>
<b>THC TOTALE</b>	<b>0.46%</b>	<b>CALCOLATO</b>

CAMPIONE ANALIZZATO: NA(10.00gr)



Pineto

24/10/2023